



www.owcustom.com

## THE PEREGRINE

The "Peregrine" is designed for the aviation family that has a light jet or possibly multiple aircraft. The home is 2698+- Sq. Ft and the hangar portion is 50'x 50'. The interior design can be customized to fit the needs and lifestyle of the family. Call today to take advantage of pre-development pricing. The reservation process is simple and easy.

Sherman Airport - KSWI has a 4000' 16-34 asphalt runway this is well maintained. The airport has 3 approaches RNAV 16, RNAV 34 and VOR/DME.



### Conceptual Design Features

**Starting at \$588,000**

Living Space: 2698 Sq Ft HVAC

Under Roof: 5200+- Sq. Ft

- Hangar Size 60' X 60'
- Hangar Door: Up to 22' High
- Bedrooms: 4
- Bathrooms: 3.5
- Garage Cars: 2 to 3
- Granite- Quartz- Marble
- Hardwoods
- Custom Cabinets
- Vaulted Ceilings
- Outdoor Living Space
- Epoxy Floors
- Modern Design
- HOA
- Gated Community
- Fee Simple Ownership
- Tankless Water Heaters
- Smart Home Features
- Solid Core Doors
- Foam Encapsulated

Owens Warford Custom Homes

KSWI- Sherman Municipal Airport

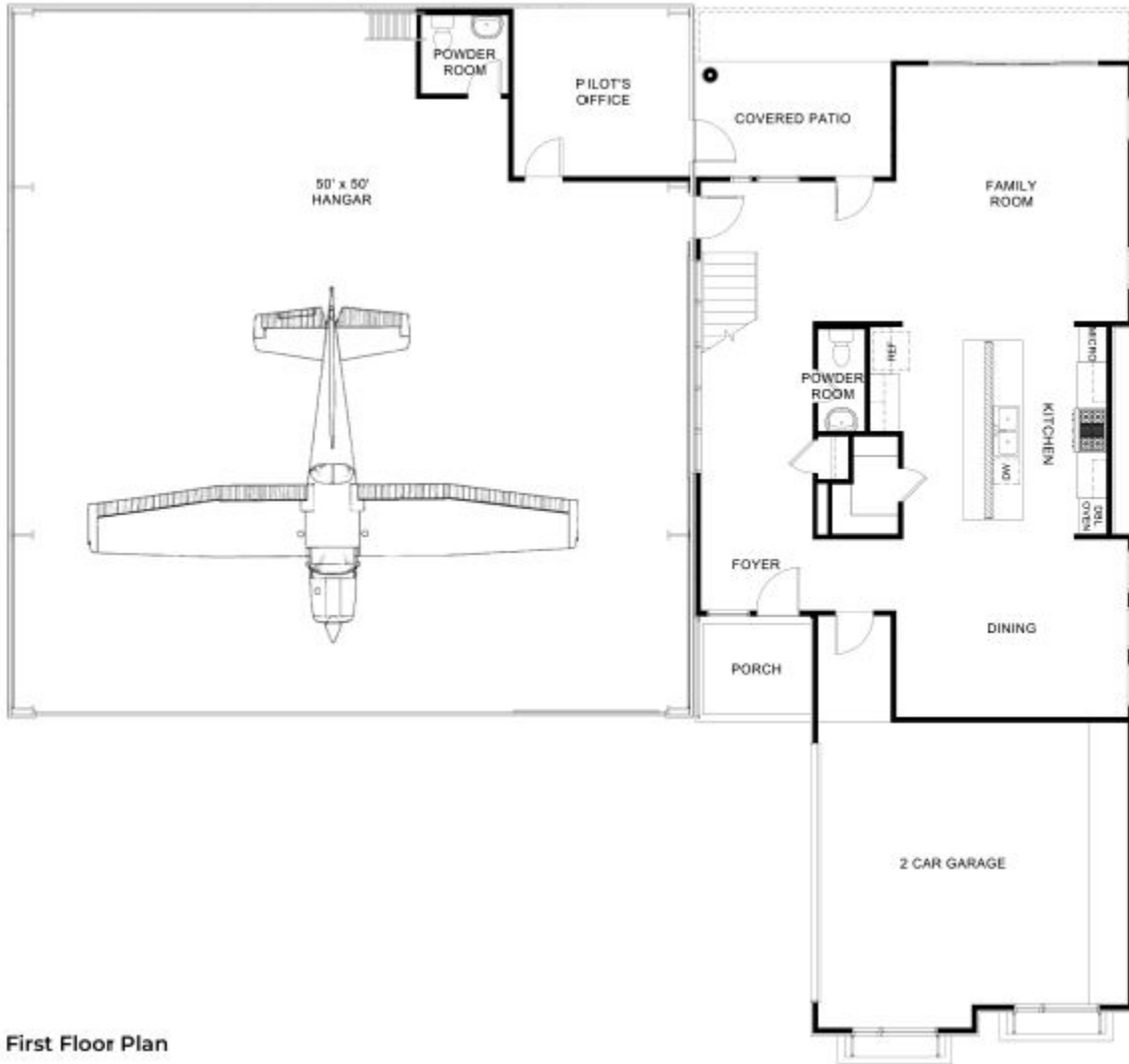
Contact Barrett Owens 214-801-9193 email: [barrett@owcustom.com](mailto:barrett@owcustom.com)

[www.owcustom.com](http://www.owcustom.com)

- Variable Speed HVAC



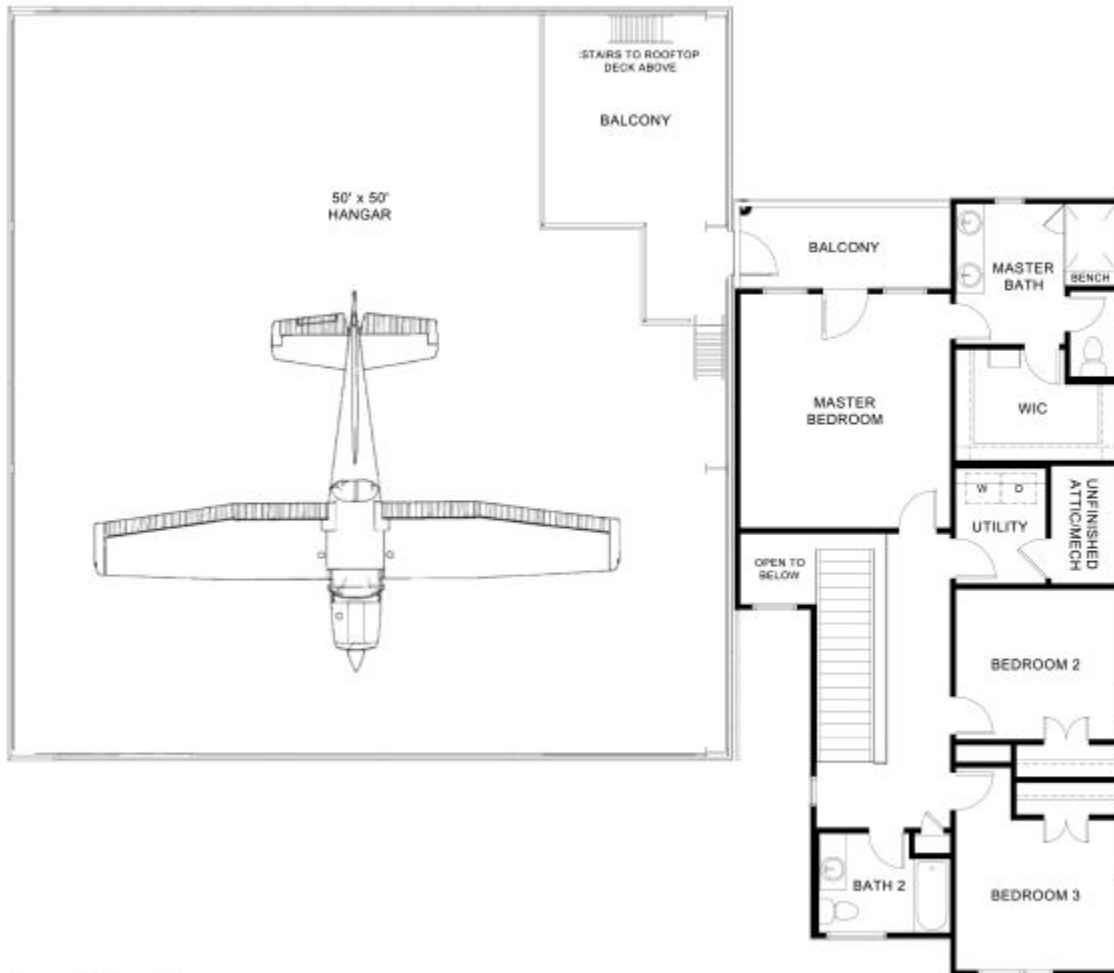
**FIRST FLOOR**



First Floor Plan

[www.owcustom.com](http://www.owcustom.com)

## SECOND FLOOR



Second Floor Plan