



www.owcustom.com

THE CONDOR

The "Condor" is designed for the aviation family that has a light jet or possibly multiple aircraft. The home is 3450+- Sq. Ft and the hangar portion is 60'x60'. The interior design can be customized to fit the needs and lifestyle of the family. Call today to take advantage of pre-development pricing. The reservation process is simple and easy.

Sherman Airport - KSWI has a 4000' 16-34 asphalt runway this is well maintained. The airport has 3 approaches RNAV 16, RNAV 34 and VOR/DME.



Conceptual Design Features

Condor: Starting at \$871,000

Living Space: 3480 Sq Ft HVAC

Under Roof: 7100+- Sq. Ft

- Hangar Size 60' X 60'
- Hangar Door: Up to 22' High
- Bedrooms: 4
- Bathrooms: 3.5
- Garage Cars: 2 to 3
- Granite- Quartz- Marble
- Hardwoods
- Custom Cabinets
- Vaulted Ceilings
- Outdoor Living Space
- Epoxy Floors
- Modern Design
- HOA
- Gated Community
- Fee Simple Ownership
- Tankless Water Heaters
- Smart Home Features
- Solid Core Doors
- Foam Encapsulated
- Variable Speed HVAC

Owens Warford Custom Homes

KSWI- Sherman Municipal Airport

Contact Barrett Owens 214-801-9193 email: barrett@owcustom.com

www.owcustom.com



www.owcustom.com

Conceptual Elevations:



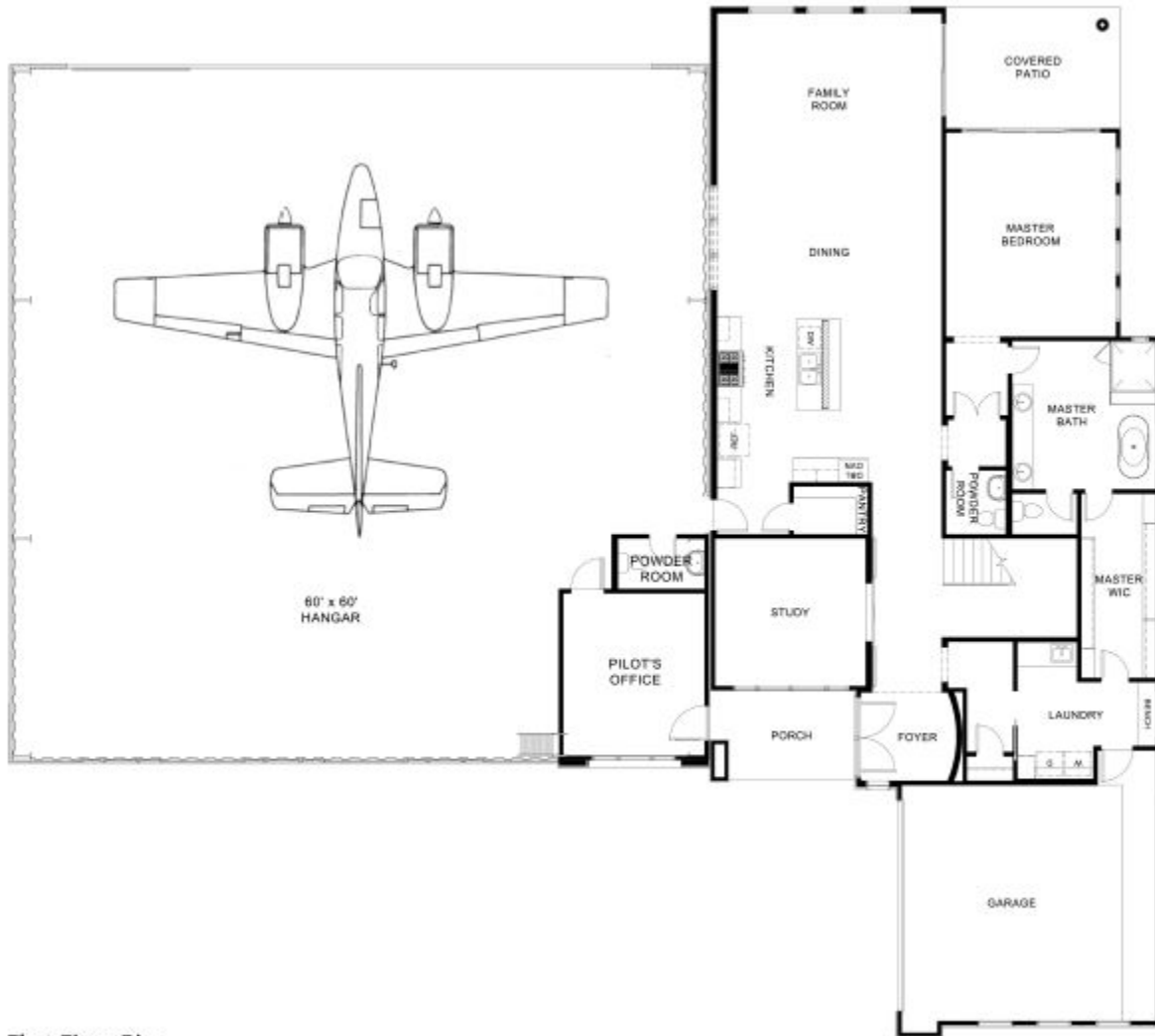
Owens Warford Custom Homes

KSWI- Sherman Municipal Airport

Contact Barrett Owens 214-801-9193 email: barrett@owcustom.com

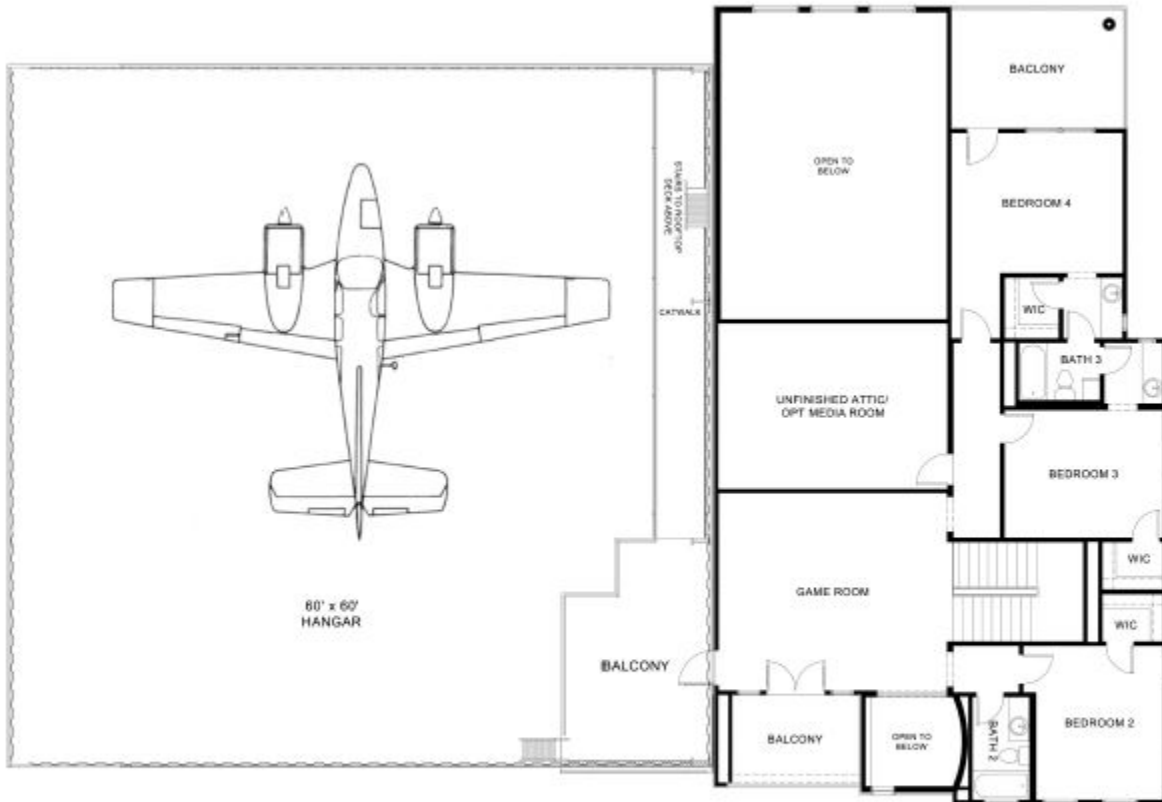
www.owcustom.com

FIRST FLOOR



First Floor Plan

SECOND FLOOR



Second Floor Plan